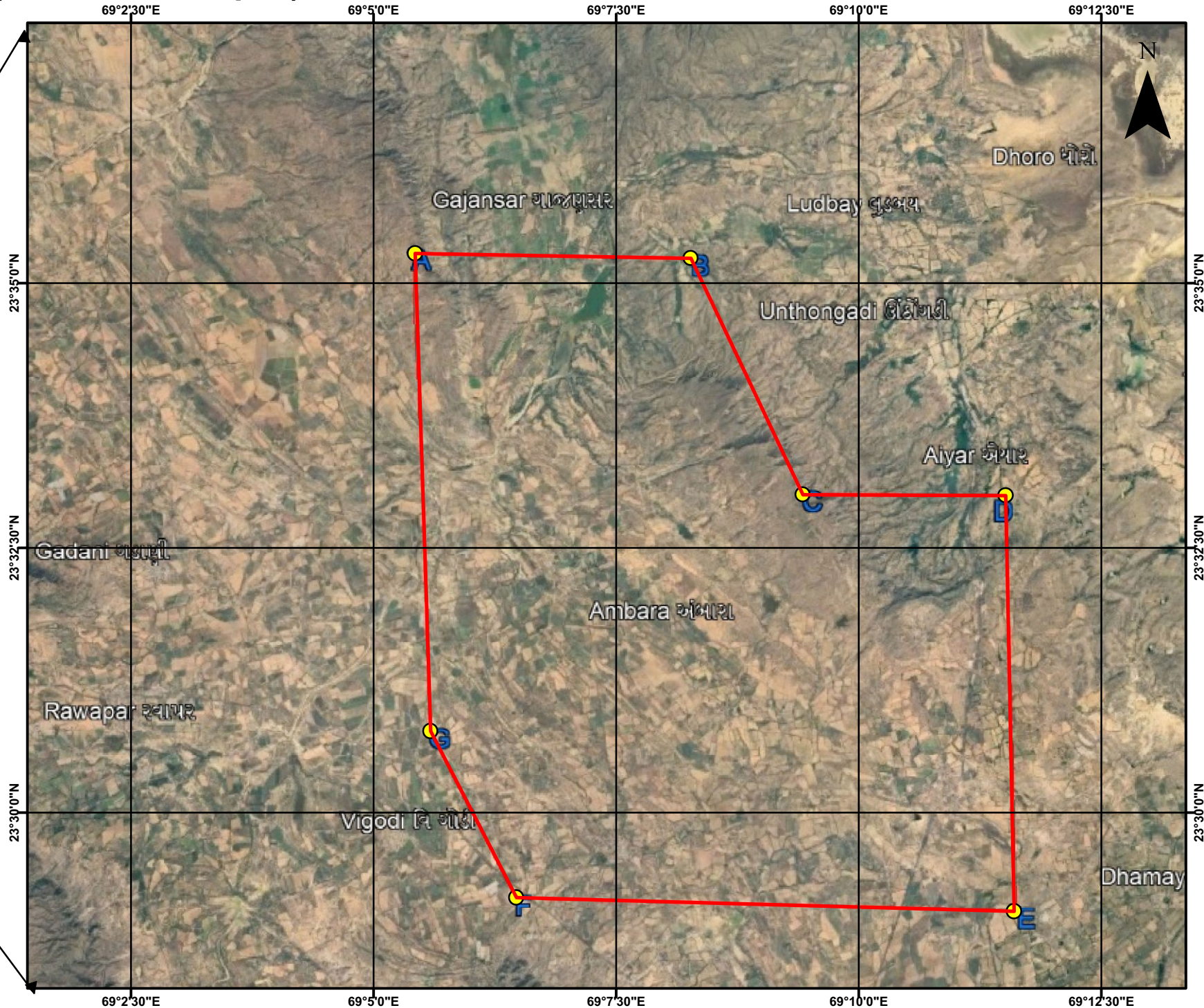
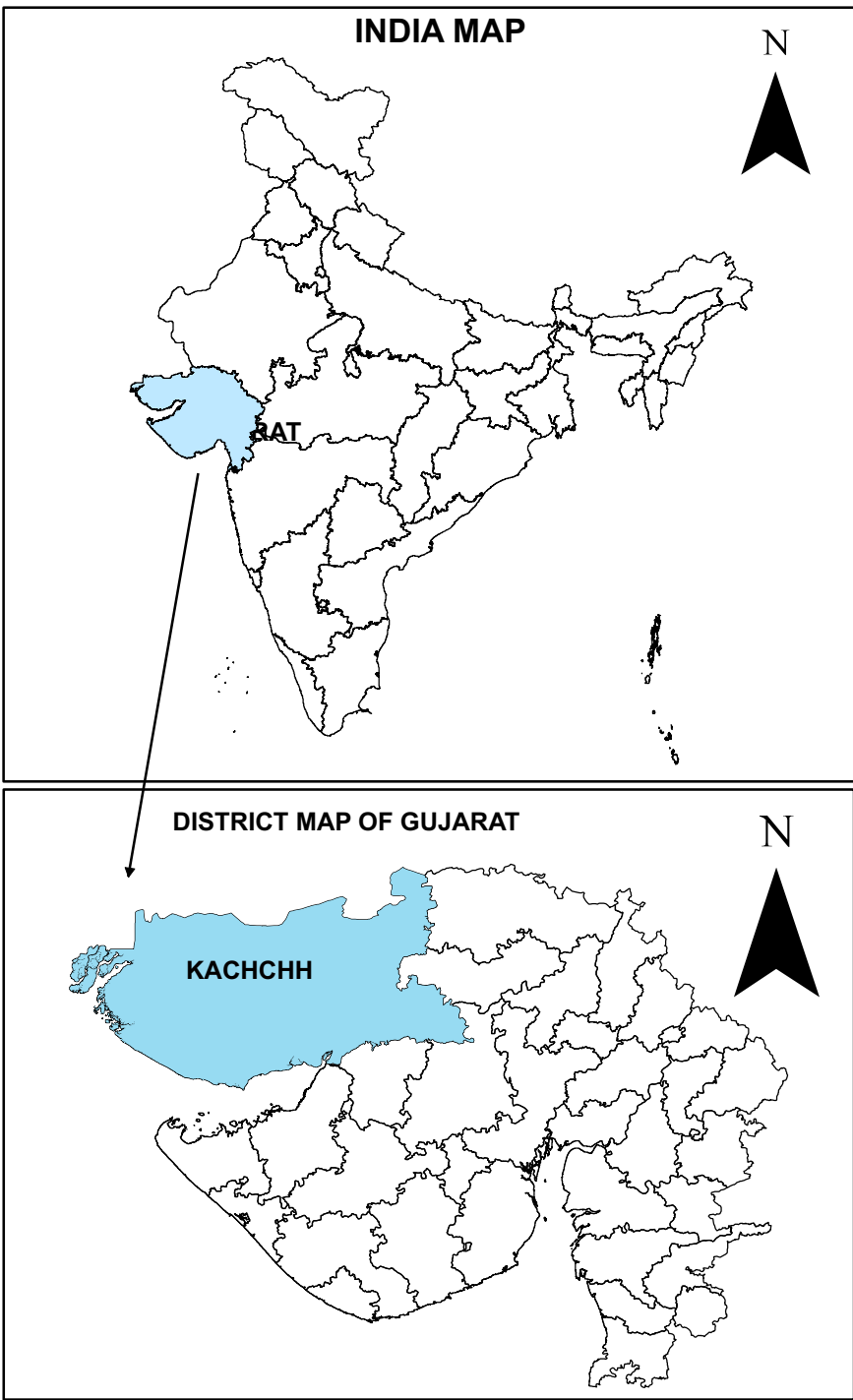


LOCATION MAP OF PROPOSED AMBARA MARU BLOCK (AREA:94.25 Sqkm),TEHSIL: NAKHATRANA DISTRICT:KACHCHH, GUJARAT




**INDEX**

Ambara Maru Block\_Boundary

Cardinal Points of Ambara Maru Block Boundary

Cardinal Points	Northing (m)	Easting (m)	Latitude	Longitude
A	2608612.343	509227.1079	23°35'16.66"	69°05'25.56"
B	2608532.862	514060.4133	23°35'13.95"	69°08'16.09"
C	2604421.206	516028.891	23°33'00.19"	69°09'25.38"
D	2604402.679	519579.1981	23°32'59.44"	69°11'30.61"
E	2597163.564	519742.3847	23°29'04.03"	69°11'36.02"
F	2597388.087	511013.394	23°29'11.63"	69°06'28.29"
G	2600288.275	509508.0633	23°30'45.97"	69°05'35.28"

NOT TO SCALE

		<b>MINERAL EXPLORATION &amp; CONSULTANCY LIMITED</b>	
<b>LOCATION MAP</b>			
NOT TO SCALE			
<b>AMBARA-MAU BLOCK</b> AREA: 94.25 Sq. Km			
DISTRICT: KACHCHH		STATE: GUJARAT	
PROCESSED AT: EXPLORATION DIVISION, MECL, NAGPUR	PREPARED BY : JALADI MADHU BABU (MANGER GEOLOGY)		
	CHECKED BY : SHRI BHUNESHWAR KUMAR(MANAGER, GEOLOGY)		
		APPROVED BY: SHRI SHRIKANT SHARMA H.O.D (EXPLORATION)	
MECL/EXPL/APR.2026		PLATE-I	